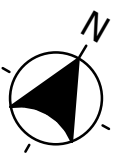
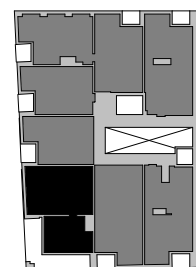


**URBAN GREEN  
DWELLING  
N°19/ Floor 04**

Gebruiksoppervlakte:  
87,7 m²



www.linckindebinck.nl



**basis**  
installatie keuken conform "keuken 0-tekening"

0 1 2 3 4 5m

schaal 1:50

01-12-2021 A3 stand 04.19